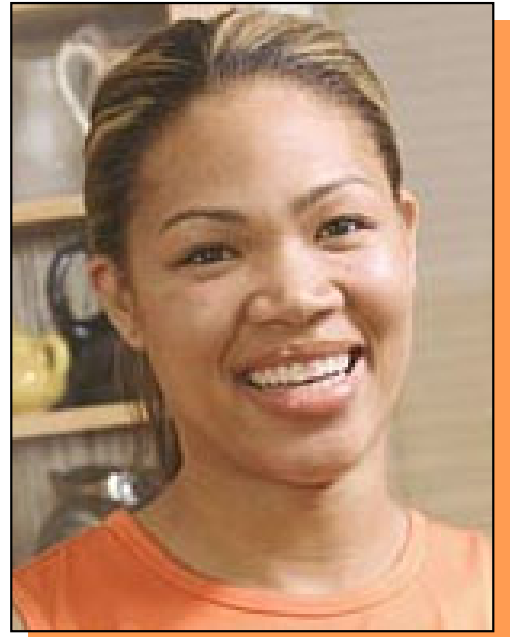


## Offering scholarships, services, and guidance

There are more than 140,000 workers in Southwestern Connecticut who are earning less than twice the poverty level. Most of them work in entry-level jobs and lack the educational and occupational skills necessary to improve their career prospects.

The Academy for Career Advancement offers scholarships, supportive services and one-on-one guidance to entry-level workers who need assistance, further training, and education to advance in their fields and raise their earning power. This is a win-win proposition for both individuals and Southwestern Connecticut's businesses – workers increase their capacity to provide for their families, and employers get the skilled workforce they need to remain competitive.

Academy students need to demonstrate basic proficiency in key basic skills such as reading comprehension, math, business writing, communication, problem-solving and life management skills, or incorporate them into their preliminary course of studies. Candidates for admission are evaluated on their interest in improving their careers and their commitment to completing the program. The Academy is a project of The WorkPlace Inc., operated by Career Resources.



This person is a model and is used for illustrative purposes only.

Career Resources is a well-established non-profit workforce development organization that has achieved both statewide and national recognition for excellence. Career Resources' mission is to provide youth and adults in Southwestern Connecticut with the skills, resources, and support necessary for personal development, economic self-sufficiency, and career advancement, and to provide planning and staffing resources to the business community in support of workforce development and economic growth.

